



**SEAMERGE**  
**G R O U P**

# **Products Catalogue**

**SEAMERGE EXPORTS LLP**




SEAMERGE Group is located in Gujarat, India, and is a leading manufacturer and exporter of high-quality non-woven fabric. With years of industry expertise, we specialize in producing premium non-woven solutions for diverse applications, ensuring quality, durability, and sustainability.

Our main products include PP spunbond non-woven fabric, SS non-woven fabric, laminated non-woven fabric, hydrophilic non-woven fabric, and medical & hygiene non-woven fabric. These fabrics are widely used in medical, packaging, industrial, agricultural, and hygiene sectors. We offer complete customization in color, GSM, width, and features to meet specific customer needs.

With state-of-the-art production facilities and multiple advanced production lines, our manufacturing capacity reaches 25 tons per day, with an annual output exceeding 9000 tons. Our products are exported to over 30 countries, gaining strong recognition in Europe, the Middle East, Southeast Asia, and beyond.

SEAMERGE Group is committed to strict quality control, and we hold internationally recognized certifications such as ISO, CE, SGS, and FDA compliance, ensuring our products meet global industry standards.

We uphold the principle of “Customer First, Integrity Management”, striving to provide our clients with the best quality products and services. We believe in win-win cooperation and long-term partnerships.

 Contact us today to explore high-quality non-woven fabric solutions!

# SPUNBOND NON WOVEN FABRIC



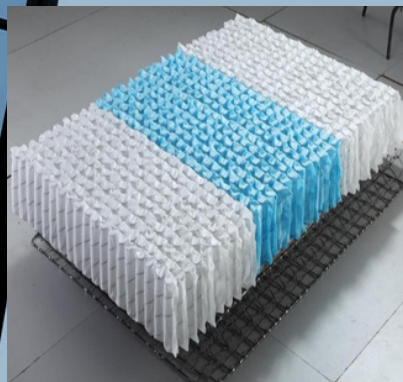
Discover our PP Spunbond Non-Woven Fabric, designed for durability, breathability, and superior strength across multiple industries. Manufactured using advanced spun bond technology, our fabric ensures uniform fiber distribution, excellent tensile strength, and enhanced softness, making it ideal for medical, hygiene, packaging, agriculture, and industrial applications.

## SPECIFICATIONS

Property	Details
Material	100% Polypropylene (PP)
Fabric Type	Spun-bondNon-Woven
GSM Range	10 GSM TO 150 GSM UP TO 250 GSM
Width	Up to 3.2 meters
Length	As Per Customer Requirement
Colours	White, Blue, Green, Pink, Black, Custom Colours
Treatments	Hydrophilic, Hydrophobic, Anti-Bacterial, UV-Stabilized
Eco-Friendly	Recyclable & Sustainable
Production Capacity	22 Tons Per Day
Delivery Time	10 to 15 Working Days
Packaging	LD PP Bags
Loading Quantity	40HQ: 9000Kg - 12000kg



# APPLACATION



# ● technical specification

Sr. No.	GSM	Average GSM			Single Value		Edge + / - Single Value Tolerance %	Average				Average			Single Value	Average			Single Value	
		Min	Max	CV%	Min	Max		Min	Max	CV%	Single Value	Min	Max	CV%		Min	Max			
1	25	23	27	7	20	30	8	38	48	15	32	22	28	15	15	55	100	20	40	120
2	30	28	32	7	25	35	8	55	65	15	45	28	36	15	20	55	100	20	40	120
3	35	33	37	7	30	40	8	65	80	12	60	37	45	12	25	60	110	17	45	130
4	40	38	42	6	34	46	8	80	95	12	67	40	50	12	28	60	110	17	45	130
5	50	48	52	6	42	58	6	85	100	12	70	60	70	12	40	60	110	17	45	130
6	60	58	62	6	51	69	6	93	110	12	90	72	85	12	55	60	110	17	45	130
7	65	63	67	5	55	75	6	106	125	12	100	77	90	12	60	60	110	17	45	130
8	70	68	72	5	59	81	6	119	140	12	112	85	100	12	80	60	110	17	45	130
9	78	76	80	5	67	89	6	137	155	12	124	95	107	12	86	60	110	17	45	130
10	80	78	82	5	72	88	6	144	160	10	128	99	110	10	88	60	110	17	45	130
11	90	88	92	5	81	99	6	153	170	10	136	108	120	10	96	60	110	17	45	130
12	100	98	102	5	90	110	6	162	180	10	144	117	130	10	104	55	100	15	40	120
13	110	108	112	5	100	120	6	167	185	10	148	122	135	10	108	55	100	15	40	120
14	115	113	117	5	105	125	6	169	188	10	151	124	138	10	111	55	100	15	40	120
15	120	118	122	5	110	130	6	171	190	10	152	126	140	10	112	55	100	15	40	120
16	130	128	132	5	120	140	6	175	194	10	164	130	144	10	123	55	100	15	40	120
17	140	138	142	5	130	150	6	179	198	10	168	134	148	10	125	55	100	15	40	120
18	150	148	152	5	140	160	6	182	201	10	171	151	151	10	128	55	100	15	40	120

# SS NON WOVEN FABRIC

## 1. SS Non-Woven Fabric for Medical Use

### SMG-SS-S2

#### High-Performance Non-Woven Fabric for Medical Safety & Protection

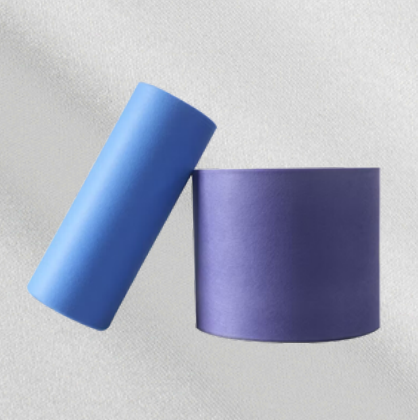
Our SS (Spunbond + Spunbond) Non-Woven Fabric is engineered to meet the rigorous demands of the medical industry. With superior strength, breathability, and liquid resistance, this fabric ensures optimal safety and comfort in critical healthcare applications. Its soft texture and uniform bonding make it an ideal choice for disposable medical products that require high durability and skin-friendly properties.



## SPECIFICATIONS

Property	Details
Material	100% Polypropylene (PP)
Fabric Type	SS (Spunbond + Spunbond) Non-Woven
GSM Range	10 GSM TO 150 GSM UP TO 250 GSM
Width	Up to 3.2 meters
Length	As Per Customer Requirement
Colours	White, Blue, Green, Custom Colours
Treatments	Hydrophilic, Hydrophobic, Anti-Bacterial, Fluid-Repellent
Eco-Friendly	Recyclable & Sustainable
Production Capacity	22 Tons Per Day
Delivery Time	10 to 15 Working Days
Packaging	LD PP Bags
Loading Quantity	40HQ: 9000Kg - 12000kg

# APPLACATION



## 2. SS Non-Woven Fabric for Hygiene Applications

### SMG-SS-S3

#### SOFT, SAFE & SKIN-FRIENDLY NON-WOVEN FABRIC FOR PERSONAL CARE & HYGIENE

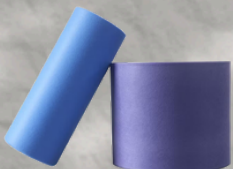
Our SS Non-Woven Fabric is specifically designed for hygiene products, offering unmatched softness, breathability, and safety for direct skin contact applications. This fabric is treated for hydrophilic, antibacterial, and hypoallergenic properties, making it perfect for personal care and hygiene essentials.

### SPECIFICATIONS

Property	Details
Material	100% Polypropylene (PP)
Fabric Type	SS (Spunbond + Spunbond) Non-Woven
GSM Range	10 GSM TO 150 GSM UP TO 250 GSM
Width	Up to 3.2 meters
Length	As Per Customer Requirement
Colours	White, Pink, Blue, Custom Colors
Treatments	Hydrophilic, Anti-Bacterial, Hypoallergenic
Eco-Friendly	Recyclable & Sustainable
Production Capacity	22 Tons Per Day
Delivery Time	10 to 15 Working Days
Packaging	LD PP Bags
Loading Quantity	40HQ: 9000Kg - 12000kg

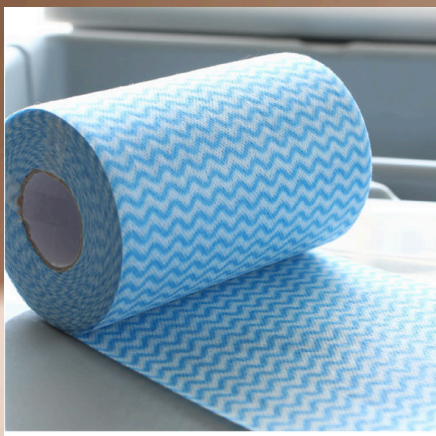
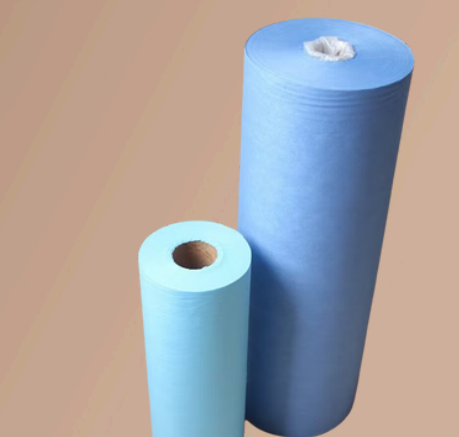
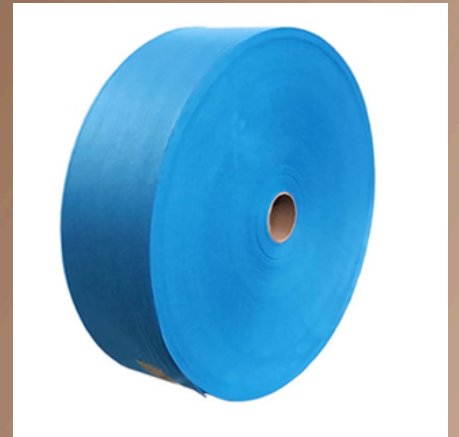
#### Key Applications:

- ✓ Baby Diapers & Wet Wipes – Ultra-soft and absorbent for delicate skin.
- ✓ Sanitary Napkins & Feminine Hygiene – Ensures comfort and dryness.
- ✓ Adult Incontinence Products – Skin-friendly and breathable.
- ✓ Disposable Underpads & Towels – Safe, hygienic, and effective.





# APPLACATION



### 3. SS Non-Woven Fabric for Packaging

#### SMG-SS-S4

#### Durable, Lightweight & Eco-Friendly Non-Woven Fabric for Packaging Solutions

Our SS Non-Woven Fabric is the perfect choice for packaging applications, offering a strong yet lightweight structure with excellent moisture resistance, durability, and reusability. Ideal for eco-friendly, reusable bags, protective wraps, and food packaging, this fabric delivers sustainability and performance in various industries.

#### SPECIFICATIONS :

Property	Details
Material	100% Polypropylene (PP)
Fabric Type	SS (Spunbond + Spunbond) Non-Woven
GSM Range	10 GSM TO 150 GSM UP TO 250 GSM
Width	Up to 3.2 meters
Length	As Per Customer Requirement
Colours	White, Black, Green, Custom Colors
Treatments	Hydrophobic, UV-Stabilized, Anti-Static, Durable
Eco-Friendly	Recyclable & Sustainable
Production Capacity	22 Tons Per Day
Delivery Time	10 to 15 Working Days
Packaging	LD PP Bags
Loading Quantity	40HQ: 9000Kg - 12000kg

#### Key Applications:

- ✓ Reusable Shopping Bags – Durable, lightweight, and eco-friendly.
- ✓ Food Packaging & Wrappers – Ensures hygiene and freshness.
- ✓ Sterile Pharmaceutical Packaging – Safe and protective.
- ✓ Industrial Protective Covers – Moisture-resistant and tough.

# APPLACATION



# AGRICULTURE NON-WOVEN FABRIC

## SMG-AG-S00

### Advanced Crop Protection & Weed Control for Sustainable Agriculture

Seamerge Group's Agriculture Non-Woven Fabric is expertly crafted to meet the unique challenges of modern agriculture. Designed with advanced UV stabilization, this fabric protects crops from excessive sunlight while ensuring optimal air and water permeability. Its robust yet flexible structure makes it perfect for diverse applications—ranging from crop protection and weed control to greenhouse coverings and mulching. By creating a controlled microenvironment, our fabric not only enhances crop growth but also promotes sustainable agricultural practices.

## SPECIFICATIONS :

Property	Details
Material	100% Polypropylene (PP) with UV Stabilization
Fabric Type	SS (Spunbond + Spunbond) Non-Woven
GSM Range	30 GSM to 200 GSM
Width	Up to 3.2 meters
Length	As Per Customer Requirement
Colours	White, Black, Green, Custom Colors
Features	UV Protection, Lightweight, Breathable, Weatherproof, -Durable, Tear-Resistant, Frost Protection
Eco-Friendly	Recyclable & Sustainable
Production Capacity	22 Tons Per Day
Delivery Time	10 to 15 Working Days
Packaging	LD PP Bags, Cartons
Loading Quantity	40HQ: 8000Kg - 12000Kg

## Key Applications of Agricultural Non-Woven Fabric

- **Crop Cover Non-Woven Fabric** – Shields plants from frost, pests, and harsh weather.
- **Weed Control Non-Woven Fabric** – Prevents unwanted plant growth while allowing soil to retain moisture.
- **UV-Stabilized Non-Woven Fabric** – Protects crops from excessive sun exposure, reducing heat stress.
- **Greenhouse & Mulching Fabric** – Regulates soil temperature and moisture, ensuring better plant growth.
- **Non-Woven Fabric for Nursery Pots** – Used in plant bags and root protection sheets.
- **Agricultural Geotextile Fabric** – Strengthens soil structure and prevents erosion.

# APPLACATION



# INDUSTRIAL & TECHNICAL NON-WOVEN FABRIC

## SMG-IN-S24

### Engineered for Excellence in Industrial & Technical Applications

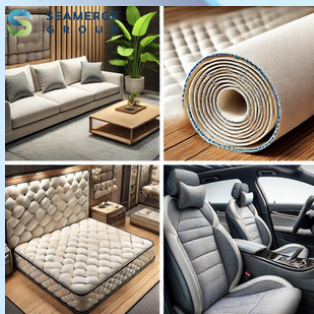
Seamerge Group's Industrial & Technical Non-Woven Fabric is your ultimate solution for applications demanding reliability and performance. Our state-of-the-art fabric is designed using cutting-edge production techniques that ensure a consistent quality product, perfect for rigorous industrial environments. With a focus on superior durability, customizability, and advanced technical properties, this fabric is engineered to perform in a wide range of applications—from heavy-duty industrial processes to specialized technical uses.

### Specifications :

Property	Details
Material	Polypropylene (PP), and Advanced Composites
Fabric Type	Spunbond, SS, Composite Non-Woven
GSM Range	30 GSM to 250 GSM
Width	Up to 3.2 meters
Length	As Per Customer Requirement
Colours	Grey, Blue, Custom Colours
Features	Durable, High Tensile Strength, UV Resistant, Customizable, Fire Retardant (optional), Recyclable & Sustainable
Applications	Industrial, Technical, Furniture, Automotive, Filtration, Construction, Geotextile, Fire Safety
Production Capacity	25 Tons Per Day
Delivery Time	10 to 15 Working Days
Packaging	LD PP Bags, Cartons
Loading Quantity	40HQ: 8000Kg - 12000Kg

# Applications of Industrial & Technical Non-Woven Fabric

- **General Industrial:** Reinforcement, insulation, and protective coverings.
- **Furniture & Upholstery:** Durable cushioning and sleek decorative finishes.
- **Automotive:** Lightweight interior components with acoustic and thermal insulation.
- **Filtration:** High-efficiency air and liquid filters.
- **Construction & Geotextile:** Soil stabilization, drainage, and erosion control.
- **Fire Retardant:** Safety materials meeting strict fire standards for insulation and protective gear.



# HYDROPHILIC & HYGIENE NON-WOVEN FABRIC

## SMG-HY-S9

### Premium Absorbency, Softness & Comfort for Hygiene & Medical Use

Seamerge Group's Hydrophilic Non-Woven Fabric is expertly crafted to enhance moisture absorption while maintaining a soft and breathable feel. The hydrophilic treatment ensures fast liquid penetration while keeping the surface dry, making it ideal for baby diapers, adult incontinence products, and feminine hygiene items.

Our fabric's lightweight and breathable structure prevents overheating, allowing for long-lasting comfort in everyday use. Its gentle touch and skin-safe properties make it the preferred choice for hygiene and medical applications worldwide.

Seamerge's dedication to quality and innovation ensures that our fabric meets the highest industry standards, offering hygienic, safe, and reliable performance in every application.

### Specifications :

Property	Details
Material	Polypropylene (PP) + Hydrophilic Treatment
Fabric Type	SS Non-Woven + Hydrophilic Coating
GSM Range	20 GSM TO 250 GSM
Width	Up to 3.2 meters
Length	As Per Customer Requirement
Colours	White, Blue, Custom Colours
Features	Super Absorbent, Soft, Skin-Friendly, Breathable, Recyclable
Applications	Hygiene Products, Medical Pads, Wipes, Adult Incontinence Products
Production Capacity	22 Tons Per Day
Delivery Time	10 to 15 Working Days
Packaging	LD PP Bags, Cartons
Loading Quantity	40HQ: 8000Kg - 11000Kg



# APPLACATION



# LAMINATED NON-WOVEN FABRIC

## High-Performance, Waterproof & Durable Solutions

Laminated non-woven fabrics are designed to offer superior strength, waterproofing, and breathability, making them ideal for medical, packaging, and industrial applications. By bonding a polypropylene (PP) spunbond non-woven fabric with a polyethylene (PE) or breathable PU film, these fabrics achieve high durability, moisture resistance, and enhanced protective properties.

At Seamerge, we provide a wide range of laminated non-woven fabrics, customized to meet the specific needs of the healthcare, packaging, and industrial sectors. Whether you need PP laminated non-woven fabric, breathable laminated non-woven fabric, medical-grade laminated fabric, or laminated non-woven bag fabric, our materials ensure efficiency, reliability, and sustainability.

## Specifications :

Property	Details
Material	Polypropylene (PP) + Laminate
Fabric Type	SS + Lamination
GSM Range	15 GSM to 150 GSM
Width	Up to 1.6 meters
Length	As Per Customer Requirement
Colours	White, Blue, Green, Custom Colours
Features	Waterproof, Anti-Bacterial, Tear-Resistant, Recyclable
Applications	Medical PPE, Packaging, Industrial Covers, Protective Wear
Production Capacity	22 Tons Per Day
Delivery Time	10 TO 15 DAYS
Packaging	LD PP Bags
Loading Quantity	40HQ: 9000Kg - 12000kg

# Applications of PP Laminated Non-Woven Fabric

## ✓ Medical & Healthcare:

- Disposable PPE suits, isolation gowns, and surgical drapes
- Medical bed covers, hospital mattress protectors, and patient underpads
- Disposable face mask layers for enhanced fluid resistance

## ✓ Industrial & Protective Wear:

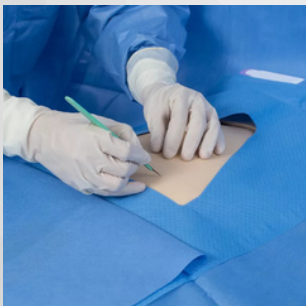
- Chemical-resistant coveralls and industrial protective clothing
- Waterproof workwear, gloves, and dust-resistant suits

## ✓ Packaging & Commercial Use:

- Moisture-proof packaging for electronics, textiles, and food items
- Reusable shopping bags, laminated tote bags, and storage covers

## ✓ Agriculture & Outdoor Use:

- Greenhouse coverings and mulching sheets for crop protection
- Weed control fabric for soil protection and water conservation



# PACKAGING & DELIVERY



**PACKAGING : BY ROLL / PLASTIC BAGS/ CARTON  
LCL OR FCL**

**20' GP : 5-6 TONS (5000-6000KG)**

**40' HQ : 9-12 TONS (9000-12000KG)**

**PORT : FOB MUDRA OR CIF ANY PORTS**

**DELIVERY TIME : 10-15 DAYS ACCORDING TO QUANTITY**

**SAMPLES DELIVERY TIME : 3-6 DAYS**

# CONTACT US

## SEAMERGE GROUP

...STRICT QUALITY CONTROL AS THE STANDARD OF ISO9000:  
2008 CERTIFIED



**Mr. DHRUVIT PATEL : ( GLOBAL SALES HEAD )**

**Add :** Office No - 243, Madhav Ratna, Nirmal Nagar,  
Bhavnagar – 364001, Gujarat, India.

**Phone No./ whatsapp :** +91 91068-24329 | +91 99983-42434

**Email :** [Contact@seamergegroup.com](mailto:Contact@seamergegroup.com)

**Web Site :** [seamergegroup.com](http://seamergegroup.com)